

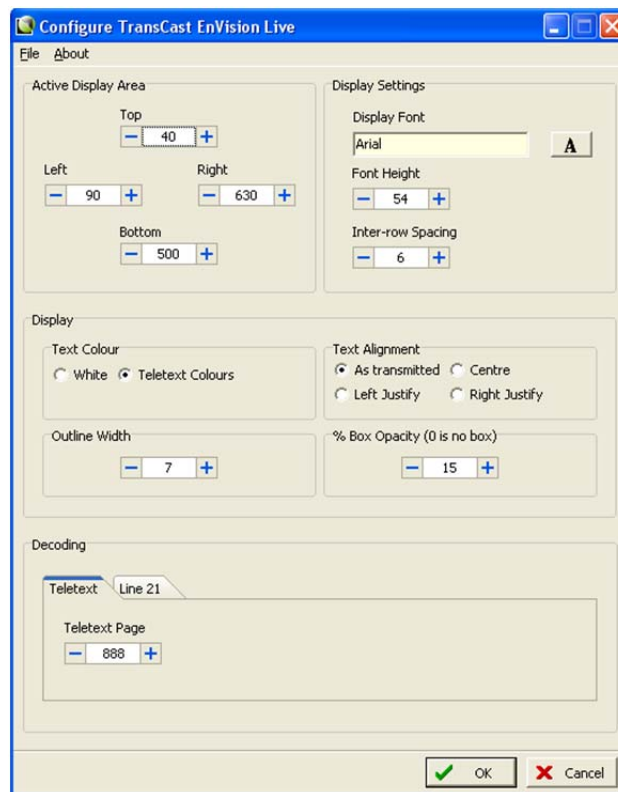


EnVision Live

VBI Closed Captions (Teletext) to Open Subtitle decoder and inserter

EnVision Live decodes VBI closed captions (such as Teletext) from the SDI input signal, and creates open (burnt-in) subtitles, in real time, on the output signal.

If the SDI signal contains a number of different VBI subtitle languages, multiple EnVision Live systems can be utilised and each unit configured to extract, and then burn-in, a different language subtitle. This enables multiple regional subtitled feeds to be generated from a single video source.



Configuration GUI

Key features

- Fully automatic, standalone operation
- SDI input and output with power fail by-pass relay
- Broadcast quality character generator supports True Type and Open Type fonts
- User configurable font selection, font size and background opacity

- Open subtitle display follows the character position and colour information contained in the VBI closed caption file
- Automatic language selection by decoding the header of the Teletext page
- System supports World System Teletext or Line 21 systems
- Simple configuration GUI

PC requirements

Operating system - Microsoft Windows 7 or Windows 2008 R2 server.

The PC hardware should have the following minimum specification: 3 GHz Pentium class processor, 1GB RAM and Windows Media player 9 or above

Licensing

The application is protected by means of a hardware security dongle.

Associated products

EnVision Live is one of a family of Closed Caption and Subtitling products available from Starfish Technologies Ltd. Together these products can be configured to create complete workflow solutions. Please see **www.starfish.tv** for more details.

All specifications and minimum requirements are subject to change without prior notice. Please check before purchase.