
Isis7 Additional Config



All content copyright © Starfish Technologies Ltd.
All rights reserved.

The software contains proprietary information of Starfish Technologies Limited.; it is provided under a license agreement containing restrictions on use and disclosure and is also protected by copyright law. Reverse engineering of the software is prohibited.

Due to continued product development this information may change without notice. The information and intellectual property contained herein is confidential between Starfish Technologies Ltd. and the client and remains the exclusive property of Starfish Technologies Ltd. If you find any problems in the documentation, please report them to us in writing. Starfish Technologies Ltd does not warrant that this document is error-free.

No part of this publication may be reproduced, stored in a retrieval system, or transmitted in any form or by any means, electronic, mechanical, photocopying, recording or otherwise without the prior written permission of Starfish Technologies Ltd.

Microsoft Word, Microsoft Excel, Microsoft Office and Windows® are trademarks of the Microsoft Corporation.

"Starfish Technologies" and the Starfish logo are trademarks of Starfish Technologies Limited.

Starfish Technologies Ltd., may occasionally be referred to as "Starfish" for brevity in this documentation, it does not refer in any way to other companies of similar or same name abbreviation.



Starfish Technologies Ltd
Reading Enterprise Centre
University of Reading
Whiteknights Road
Reading
RG6 6BU
United Kingdom

Office: Tel +44 (0)118 935 7253

(This is not a product support contact number)

Fax +44 (0)870 132 6277

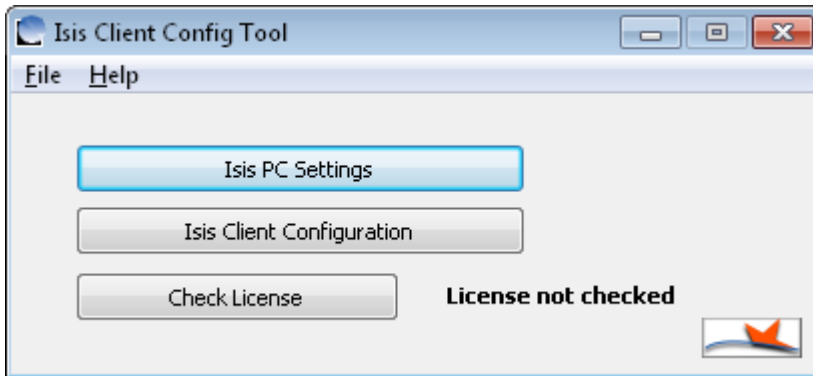
Internet E-Mail: sales@starfish.tv

Website: www.starfish.tv

Additional Isis7 Configurations

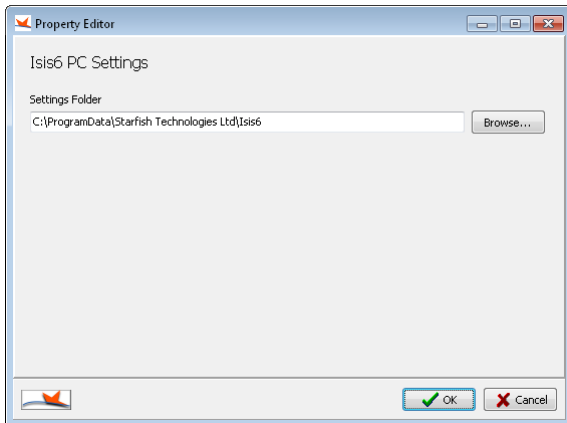
Isis Client Config

There are three sections to the Client Configuration Tool



Isis PC Settings

The **Isis PC Settings** button will display the configuration shown below.

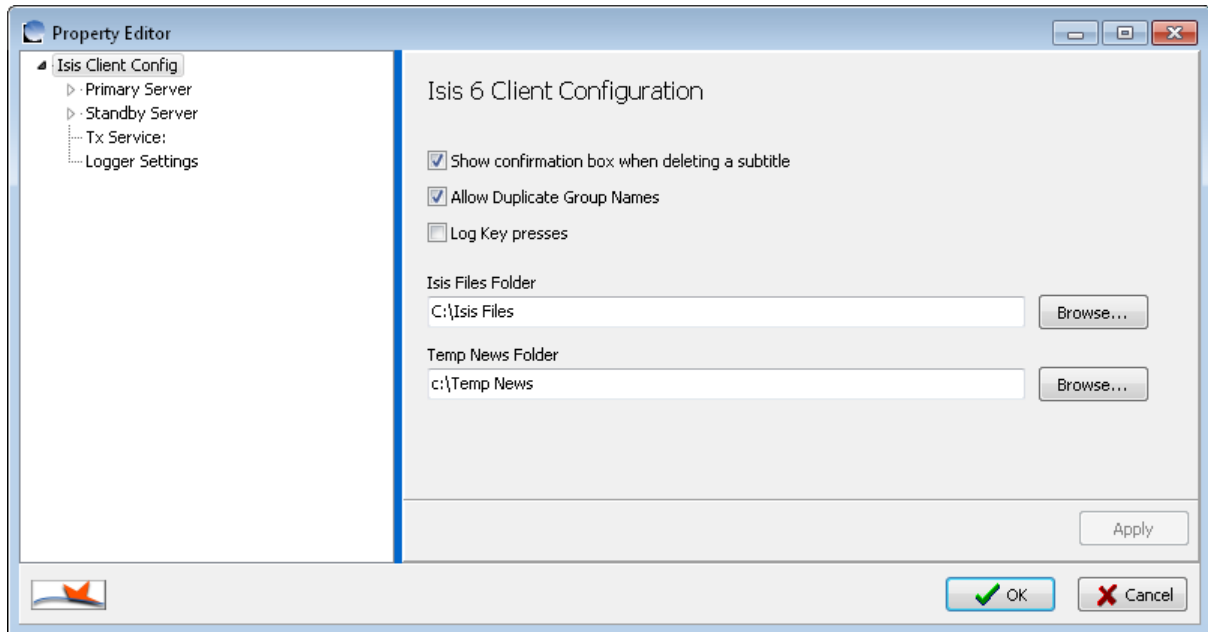


This setting is usually automatically filled in for you, and is set to the folder where the Isis configuration files are stored.

Isis Client Configuration

The screen shots show typical settings for a stand-alone system. For a networked system, the IP address of the server will be different and unique to your system.

The **Isis Client Configuration** button on the **Client Configuration Tool** displays the dialog shown below.



- The three tick boxes enable the functions as described
- **Isis File Folder** sets the default location that Isis uses for file export and import. This folder must exist on the system.
- **Temp News Folder** sets the folder used for temporary storage for live iNews linking This folder must exist on the system.

If you select the **Primary Server** entry on the tree-view on the left, then select the **Master Database** entry you will see the screen below. You may need to resize the dialog box to see all the information required.

The screenshot shows a 'Property Editor' window with a tree view on the left and a 'Database Connection Settings' panel on the right. The tree view is expanded to 'Primary Server' > 'Master Database'. The settings panel includes fields for 'Server Name or IP Address' (127.0.0.1), 'Server Description', 'Database Type' (Interbase), 'Default Database Role' (Master), and a checkbox for 'Starfish Comm Server Running'. Below these are fields for 'Database ID' (GUID), 'User' (with 'Use Windows Username' checked, 'Username' as 'ROB', and a masked 'Password'), and tabs for 'Interbase Parameters', 'ADO Parameters', and 'UNC Data Location'. The 'Interbase Parameters' tab is active, showing 'Database Filename' (C:\Databases\Isis Database\Master Database\ISISMASTER.IB), 'Database Admin Password' (masked), 'Database Protocol' (TCP/IP), 'Default Database Backup Folder', and 'Interbase Instance' (with a checkbox for 'Interbase 2009 or later (UTF-8)'). Buttons for 'Apply', 'OK', and 'Cancel' are at the bottom.

- **Server Name or IP Address** This is either the NetBIOS PC name or the IP address of the PC that is running Isis Packet Server. In a stand-alone all-in-one installation, this is the local PC, so enter the IP of 127.0.0.1 as shown in the example. *If you are linked via a VPN or via a router from a different network, it is advisable to use the IP address and not the server name.*
- **Server Description** is the friendly display name used to represent this server.
- **Database Type** should be set to InterBase. Other settings are available for use with other database systems in future releases.
- **Default Database Role** defines if the server in question is normally a master server or is one of a possible set of backup servers. For normal installations there is only one server and its role is **Master**
- **Starfish Comm Server Running** is for use in large multi-server environments. Ordinarily this would be left un-ticked as shown in the example.
- **New ID** generates a new GUID ID for the database and is only used in large multi-server environments.
- **User** should be left with **Use Windows Username** ticked. Un-ticking this box is for support purposes only.

There are 3 tabs at the bottom for database connection information. You only need to configure the **InterBase Parameters Tab**:

Database Filename contains the **Database Path** and **File Name** of the Isis master database file. It refers to the path and filename as seen from the server i.e. it refers to the local path on the server, not the path as would be seen by the client via a network share. If the default location is chosen (for InterBase), then this should be
C:\Databases\Isis Database\Master Database\ISISMASTER.IB as shown in the example.

- **Database Admin Password** field contains (hidden input for security) the password for the admin account of the SQL database. For InterBase this is the password for the **SYSDBA** account. This is preset as **masterkey**, but is made available for the configuration tool should this ever be changed within InterBase. Isis applications use this account password internally for system connectivity to allow the automatic addition of authorised usernames to the database security file. You can leave this field blank if you so desire, but if you do you must manually add users to the InterBase authorised users list.
- **Database Protocol** sets the communication method that Isis talks to the SQL database. It is normal in most installations to have this set to TCP/IP.
- **Default Database Backup Folder** contains the path to the folder for automated database functionality.

If you select the **Primary Server** entry on the tree-view on the left, then select the **Video Database** entry you will see the screen below. You may need to resize the dialog box to see all the information required.

Property Editor

- Isis Client Config
 - Primary Server
 - Master Database
 - Video Database
 - Standby Server
 - Tx Service:
 - Logger Settings

Database Connection Settings

Server Name or IP Address: 127.0.0.1 Server Description: []

Database Type: Interbase Default Database Role: Master Starfish Comm Server Running

Database ID: {A3393EE8-A11B-4E1C-BFBF-BB8017C11374}

User

Use Windows Username Username: ROB Password: []

Interbase Parameters ADO Parameters UNC Data Location

Database Filename (Must be Local Path on the Server)
C:\Databases\Isis Database\Master Database\ISISVIDEO.IB

Database Admin Password: [] Database Protocol: TCP/IP

Default Database Backup Folder (Local Path on the Server)
[]

Interbase Instance (leave blank for normal installations)
[] Interbase 2009 or later (UTF-8)

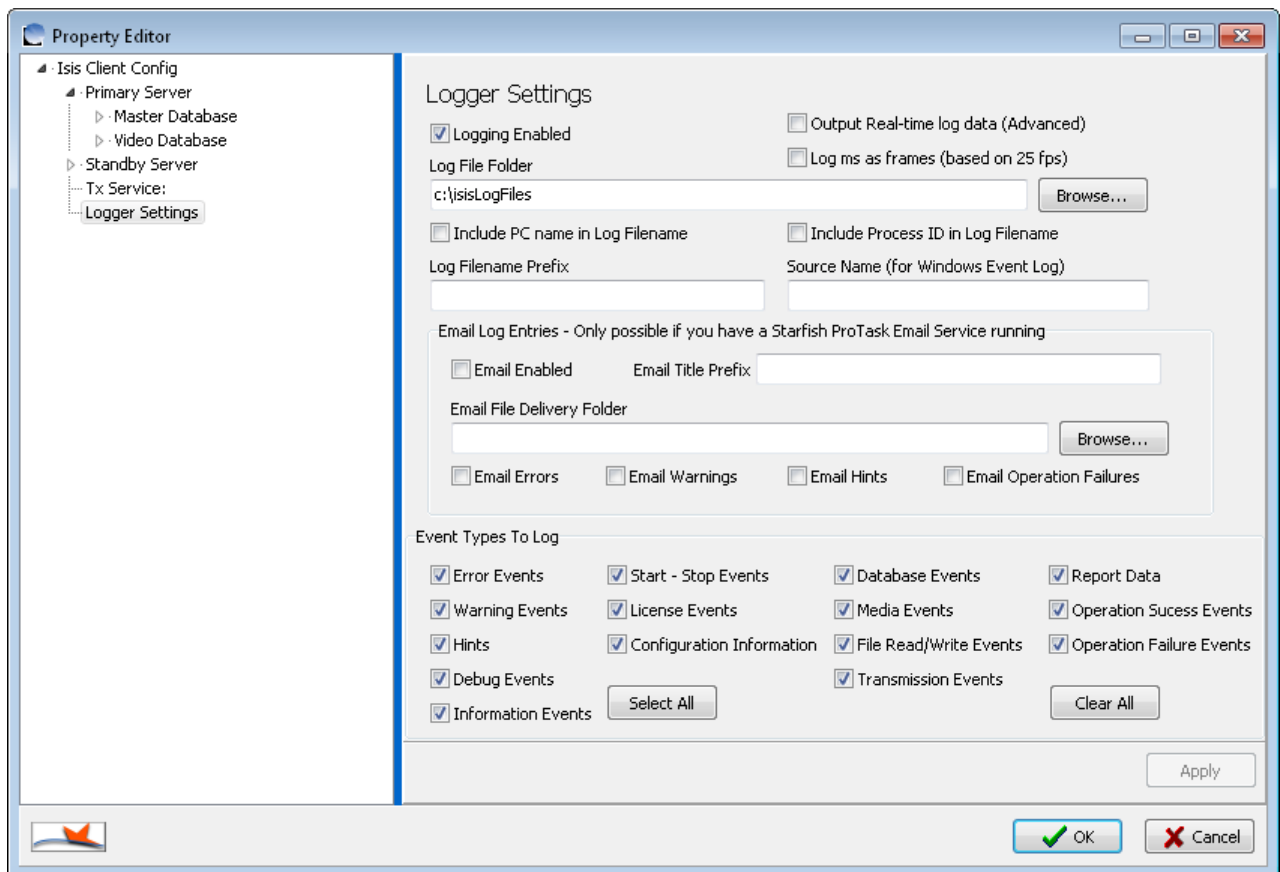
- **Server Name or IP Address** This is either the NetBIOS PC name or the IP address of the PC that is running Isis Packet Server. In a stand-alone all-in-one installation, this is the local PC, so enter the IP of 127.0.0.1 as shown in the example. *If you are linked via a VPN or via a router from a different network, it is advisable to use the IP address and not the server name.*
- **Server Description** is the friendly display name used to represent this server.
- **Database Type** should be set to InterBase. Other settings are available for use with other database systems in future releases.
- **Default Database Role** defines if the server in question is normally a master server or is one of a possible set of backup servers. For normal installations there is only one server and its role is **Master**.
- **Starfish Comm Server Running** is for use in large multi-server environments. Ordinarily this would be left un-ticked as shown in the example.
- **New ID** generates a new GUID ID for the database and is only used in large multi-server environments.
- **User** should be left with **Use Windows Username** ticked. Un-ticking this box is for support purposes only.

There are 3 tabs at the bottom for database connection information. You only need to configure the **InterBase Parameters Tab**:

Database Filename contains the **Database Path** and **File Name** of the Isis master database file. It refers to the path and filename as seen from the server i.e. it refers to the local path on the server, not the path as would be seen by the client via a network share. If the default location is chosen (for InterBase), then this should be C:\Databases\Isis Database\Master Database\ISISVIDEO.IB as shown in the example.

- **Database Admin Password** field contains (hidden input for security) the password for the admin account of the SQL database. For InterBase this is the password for the **SYSDBA** account. This is preset as **masterkey**, but is made available for the configuration tool should this ever be changed within InterBase. Isis applications use this account password internally for system connectivity to allow the automatic addition of authorised usernames to the database security file. You can leave this field blank if you so desire, but if you do you must manually add users to the InterBase authorised users list.
- **Database Protocol** sets the communication method that Isis talks to the SQL database. It is normal in most installations to have this set to TCP/IP.
- **Default Database Backup Folder** contains the path to the folder for automated database functionality.

If you select the **Logger Settings** entry on the tree-view on the left, you will see the screen below. You may need to resize the dialog box to see all the information required.



- **Logging Enabled** is a tick-box option that turns logging on or off.
- **Log file location** sets the folder in which the application writes the log files to. The folder must exist and have appropriate security setting to allow the user to write file to.
- **Include PC Name In Log Filename** enables as the name suggests, the addition of the PC name to the log filename. This is useful if using more than one system and the log files are stored on a remote shared storage folder.
- **Log file prefix** is the text that will prefix all log filenames, the suggested default is QC as shown.
- **Source Name** is the application name that is written within the Windows Event Log to indicate the source of the log entry, the suggested default is Isis7 as shown.
- **Output Real-Time log data (Advanced)** is a facility to allow a live readout of system operations and is only intended for support use.
- **Event Types To Log** This set of tick-box options control how much or how little information is recorded in the logs.

If you select **Debug Events** you may get a large amount of events logged that only mean anything to the Starfish development team. Leave unticked unless asked to do so by Starfish support.

Logger Email options

These options are ONLY for use on larger systems that have the Starfish Email Service installed. Do not enable for any other situation. They are NOT for configuring the emailing of QC reports.

- **Email Enabled** is a facility to allow the application to send email warnings in case of errors. A valid email configuration file is required for this to work. This option is normally used for server-side services and not for client applications.
- **Email Title Prefix** Any text in this box will be automatically inserted at the start of every email title.

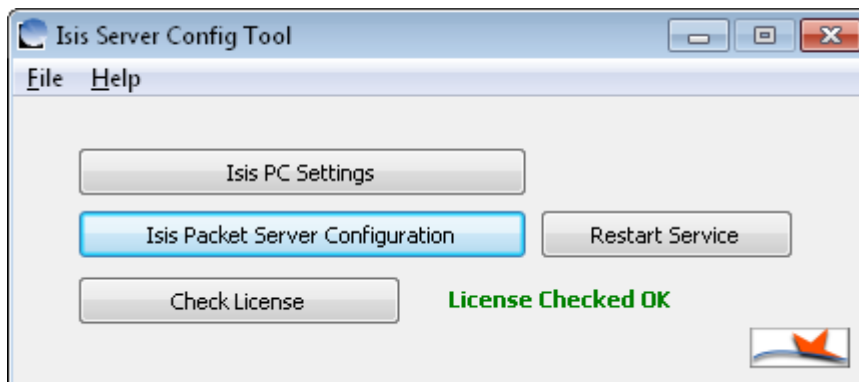
The **Comm Client Config** sections are only used in very large multi-server systems and as such is not described within the scope of this document.

Check License

This button allows you to check that Isis can "see" and read the license from the DK2 dongle.

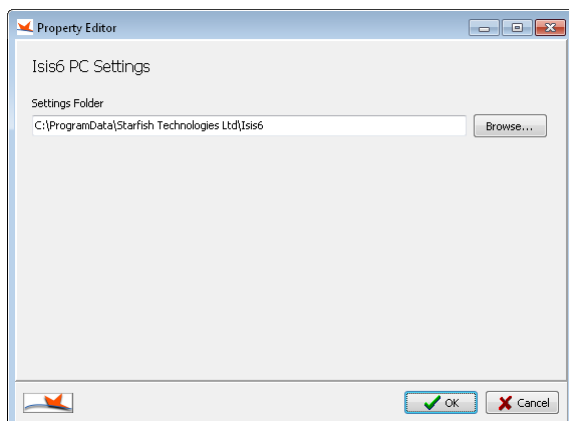
Isis Server Config

There are four sections to the **Server Configuration Tool**



Isis PC Settings

The **Isis PC Settings** button will display the configuration shown below.

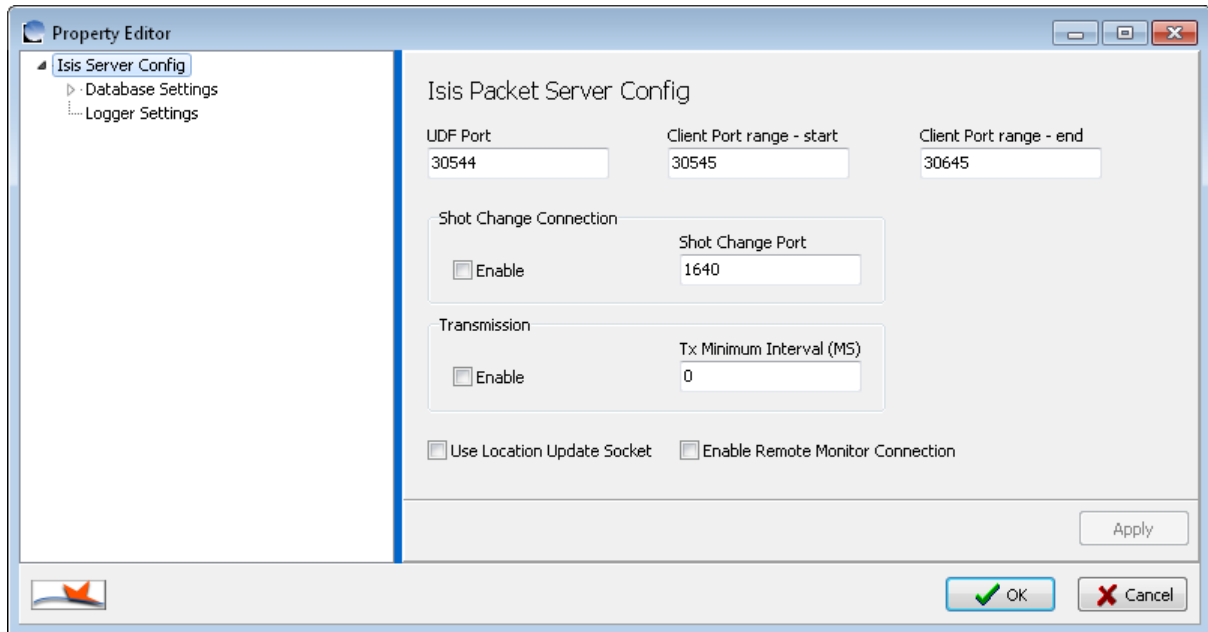


This setting is usually automatically filled in for you, and is set to the folder where the Isis configuration files are stored.

Isis Packet Server Configuration

The screen shots show typical settings for a stand-alone system. For a networked system, the IP address of the server will be different and unique to your system.

The **Isis Packet Server Configuration** button on the **Server Configuration Tool** displays the dialog shown below.



- **UDF Port** sets the port that clients will use to connect to packet server for multi-user sharing of programme databases.
- **Client Port Range - start** and **Client Port Range - end**, set the range of TCP ports that clients that can be allocated from packet server for programme database sharing.
- **Shot Change - Enable** is used if the shot-change processing engine is installed.
- **Shot Change - Shot Change Port** sets the TCP port that will be used to communicate shot change information.
- **Transmission - Enable** is used if the system has the live TX option as part of the license.

If you select the **Database Settings** entry on the tree-view on the left, you will see the screen below. You may need to resize the dialog box to see all the information required.

The screenshot shows a 'Property Editor' window with a tree view on the left containing 'Isis Server Config', 'Database Settings', and 'Logger Settings'. The main area is titled 'Database Connection Settings' and contains the following fields and controls:

- Server Name or IP Address:** 127.0.0.1
- Server Description:** (empty text box)
- Database Type:** Interbase (dropdown menu)
- Default Database Role:** Master (dropdown menu)
- Starfish Comm Server Running
- Database ID:** {4A644C15-9207-4567-9815-DDCAE9D90EF8} (with a 'New ID' button)
- User:**
 - Use Windows Username
 - Username:** ROB
 - Password:** (masked with dots)
- Interbase Parameters / ADO Parameters / UNC Data Location:** (tabbed interface)
 - Database Filename (Must be Local Path on the Server):** C:\Databases\Isis Database\Master Database\ISISMASTER.IB
 - Database Admin Password:** (masked with dots)
 - Database Protocol:** TCP/IP (dropdown menu)
 - Default Database Backup Folder (Local Path on the Server):** (empty text box)
 - Interbase Instance (leave blank for normal installations):** (empty text box)
 - Interbase 2009 or later (UTF-8)

At the bottom right, there are 'Apply', 'OK', and 'Cancel' buttons.

- **Server Name or IP Address** This is either the NetBIOS PC name or the IP address of the PC that is running Isis Packet Server. In a stand-alone all-in-one installation, this is the local PC, so enter the IP of 127.0.0.1 as shown in the example.
- **Server Description** is the friendly display name used to represent this server.
- **Database Type** should be set to InterBase. Other settings are available for use with other database systems in future releases.
- **Default Database Role** defines if the server in question is normally a master server or is one of a possible set of backup servers. For normal installations there is only one server and its role is **Master**.
- **Starfish Comm Server Running** is for use in large multi-server environments. Ordinarily this would be left un-ticked as shown in the example.
- **New ID** generates a new GUID ID for the database and is only used in large multi-server environments.
- **User** should be left with **Use Windows Username** ticked. Un-ticking this box is for support purposes only.

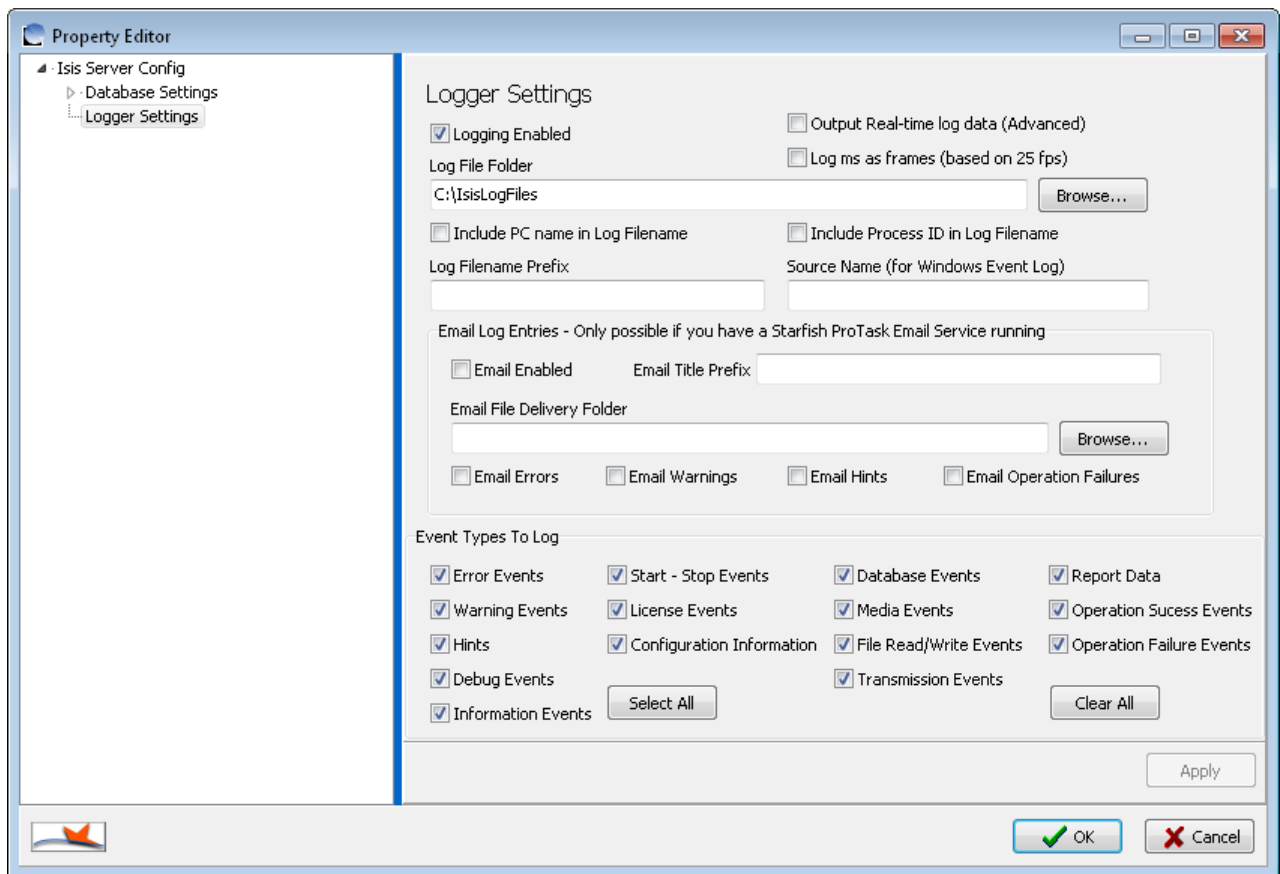
There are 3 tabs at the bottom for database connection information. You only need to configure the **InterBase Parameters Tab**:

Database Filename contains the **Database Path** and **File Name** of the Isis master database file. If the default location is chosen (for InterBase), then this should be

C:\Databases\Isis Database\Master Database\ISISMASTER.IB as shown in the example.

- **Database Admin Password** field contains (hidden input for security) the password for the admin account of the SQL database. For InterBase this is the password for the **SYSDBA** account. This is preset as **masterkey**, but is made available for the configuration tool should this ever be changed within InterBase. Isis applications use this account password internally for system connectivity to allow the automatic addition of authorised usernames to the database security file. You can leave this field blank if you so desire, but if you do you must manually add users to the InterBase authorised users list.
- **Database Protocol** sets the communication method that Isis talks to the SQL database. It is normal in most installations to have this set to TCP/IP.
- **Default Database Backup Folder** contains the path to the folder for automated database functionality.

If you select the **Logger Settings** entry on the tree-view on the left, you will see the screen below. You may need to resize the dialog box to see all the information required.



- **Logging Enabled** is a tick-box option that turns logging on or off.
- **Log file location** sets the folder in which the application writes the log files to. The folder must exist and have appropriate security setting to allow the user to write file to.
- **Include PC Name In Log Filename** enables as the name suggests, the addition of the PC name to the log filename. This is useful if using more than one system and the log files are stored on a remote shared storage folder.
- **Log file prefix** is the text that will prefix all log filenames, the suggested default is QC as shown.
- **Source Name** is the application name that is written within the Windows Event Log to indicate the source of the log entry, the suggested default is Isis7 as shown.
- **Output Real-Time log data (Advanced)** is a facility to allow a live readout of system operations and is only intended for support use.
- **Event Types To Log** This set of tick-box options control how much or how little information is recorded in the logs.

If you select **Debug Events** you may get a large amount of events logged that only mean anything to the Starfish development team. Leave unticked unless asked to do so by Starfish support.

Logger Email options

These options are ONLY for use on larger systems that have the Starfish Email Service installed. Do not enable for any other situation. They are NOT for configuring the emailing of QC reports.

- **Email Enabled** is a facility to allow the application to send email warnings in case of errors. A valid email configuration file is required for this to work. This option is normally used for server-side services and not for client applications.
- **Email Title Prefix** Any text in this box will be automatically inserted at the start of every email title.

The **Comm Client Config** sections are only used in very large multi-server systems and as such is not described within the scope of this document.

Check License

This button allows you to check that Isis can "see" and read the license from the DK2 dongle.

Index

A

Additional Isis7 Configurations • 3

C

Check License • 11, 16

I

Isis Client Config • 4

Isis Client Configuration • 5

Isis Packet Server Configuration • 12

Isis PC Settings • 4, 11

Isis Server Config • 11